

The background features abstract, overlapping green geometric shapes, primarily triangles and polygons, in various shades of green, creating a modern and dynamic visual effect.

Re-Inventing the Wheel: Avoid it at all Costs

Jill Soto and Rozalyn Zuest

Expectations

- ▶ What were you hoping for in this session?

Definitions

- ▶ Reinvent—change something so much that it appears to be entirely new

Small Group

- ▶ Discuss at your table the one nugget of information you learned here at the conference that you can take back to your registry to “re-invent” or build off of something you have that is existing

Re-Inventing Individual Training Needs Assessments

- ▶ Minnesota has Individual Training Needs Assessments for practitioners in the registry
- ▶ Oklahoma re-invented Individual Training Needs Assessments for our Trainers
 - ▶ Must pass a core competency test at 90% to teach that core competency area

Trainer Individual Training Needs Assessments

- ▶ Trainers must pass each area they want to teach at 90%
- ▶ Fail the first time they can either take 2 clock hours of training in that area OR wait 14 days to re-take the quiz
- ▶ Fail the second time they must take 10 hours of training in that area
- ▶ Fail the third time the system will not unlock, CECPD staff will have to unlock

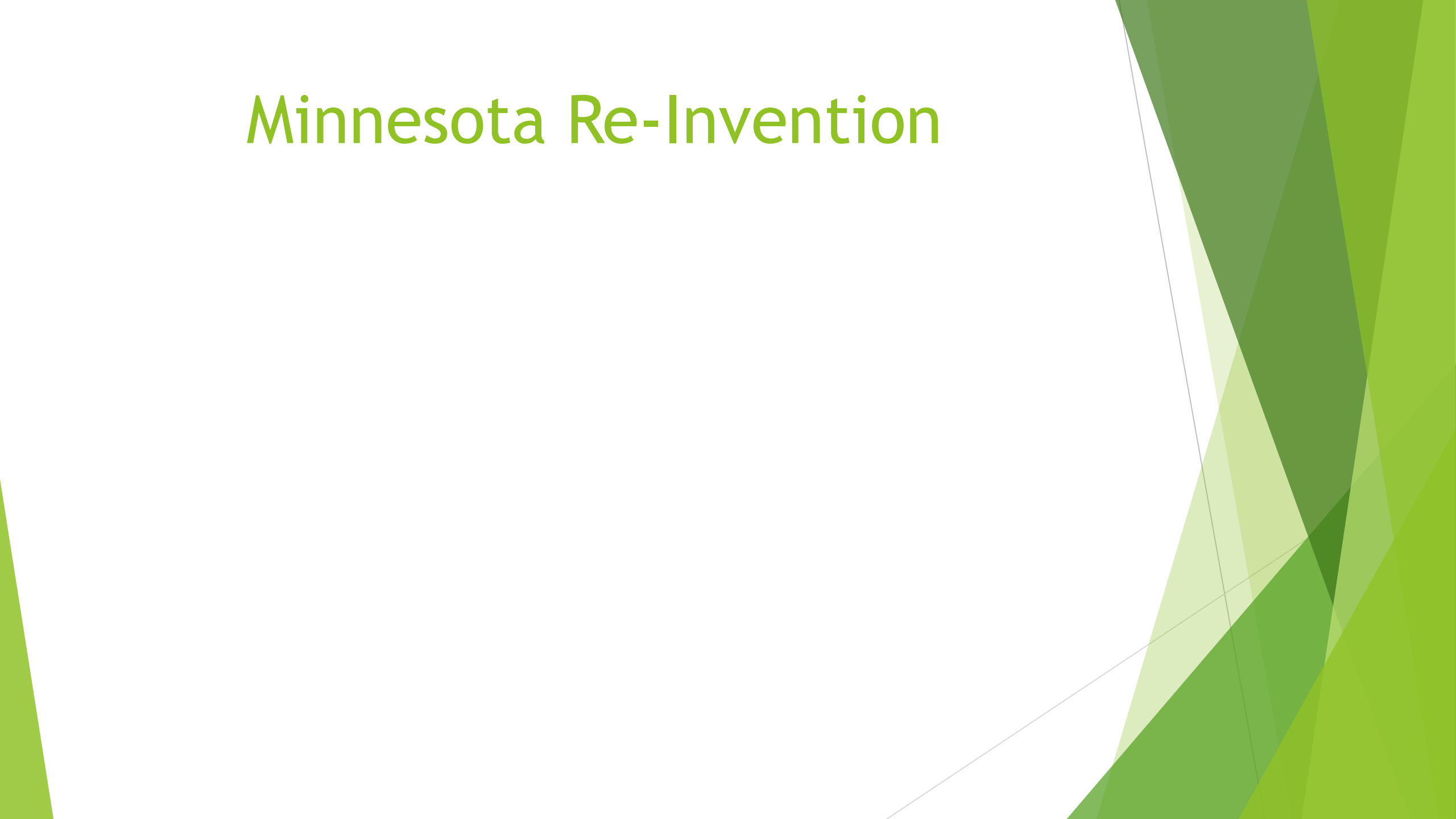
Pilot Year

- ▶ No impact on approved courses in the system
- ▶ Norming the quizzes
- ▶ Unlimited unlocks for the quizzes

Data system differences

- ▶ Oklahoma Trainer view
- ▶ Minnesota Practitioner view

Minnesota Re-Invention



Oklahoma Next Steps

- ▶ Core Competency tests for training sessions
 - ▶ This supports the IOM recommendations of competency based learning
 - ▶ Provides evidence of learning with pre-post tests

Questions?